

DIH-A

Dorot Irrigation Hydrant

Application

The "DIH-A" hydrant is designed for irrigation control applications. The turbine is located at the side of the Hydrant pipe. Major section of the pipe is free for water flow.

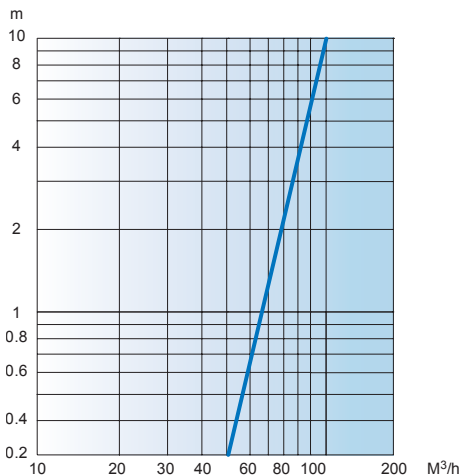
Features

- Unique C-Slot collar in the diaphragm design - enables stable regulation at low flow and high DP
- Low head loss
- Magnetic drive
- Optional Electric output
- Hermetic vacuum-sealed register
- Inlet 4" flange connection
- Outlet 3" threaded connection
- Easy and simple to operate and maintain

Specifications

- Min opening pressure: 0.5 bar
- Measuring accuracy: ISO4064 Class A standard
- Pressure Rating: 10 Bar
- Body material: polyester-coated Cast Iron
- Bonnet: GRP
- Max. temperature: 60°C

Head Loss

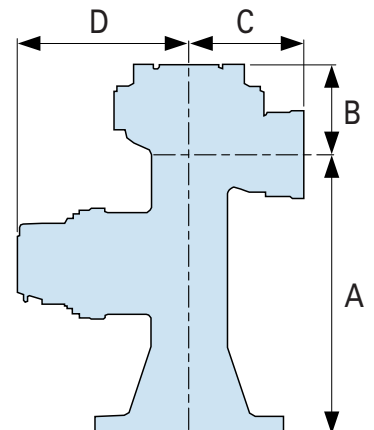


Technical Data

- Maximum Flow Rate (Qs): 80 M³/h
- Nominal Flow Rate (Qt): 40 M³/h
- Minimum Flow Rate (Qmin): 3.2 M³/h
- Minimum Reading: 0.005 M³/h
- Maximum Reading: 9999999 M³/h
- Electrical Output: 0.1 M³/h (other upon request)

Dimensions

- A - 339 mm
- B - 106 mm
- C - 133 mm
- D - 200 mm
- Weight 17 Kg



DIH-A Dorot Irrigation Hydrant

Optional Applications

M Manually Controlled Valve

The valve is manually controlled by a three port selector, allowing the user to select the closed, opened or remote controlled valve position.

EL(D3) 3-way Electric Valve

A 3-way solenoid valve, activated by an electric current or an electric pulse (latch), which open or close the main valve.

The standard valve is supplied as “Normally Closed” (“Normally Open” is optional). Electrical actuation can be added to other control applications upon request.

RC Hydraulic Remotely Controlled Valve

The valve fully open upon a hydraulic command delivered through a control tube. As the pressure is released from the control tube, the valve closes drip-tight. This application enables locating all solenoid valves at one convenient point and reduces the risk of lightning strikes damaging the system.

PR Pressure Reducing Valve

The valve maintains a preset downstream pressure, regardless of upstream pressure or flow rate fluctuations.

The main valve is controlled by a 3-way pilot valve allowing complete opening when the upstream pressure drops below the set-point pressure.



PR/EL Electrically-activated Pressure Reducing Valve

Designed to open and regulate downstream pressure to a stable, preset value upon an electric command from an irrigation controller. The electric command may be of constant current or pulse, as determined by the controller in use.

PR/RC Hydraulically-activated Pressure Reducing Valve

Designed to open and regulate the downstream pressure to a stable preset value upon a hydraulic command delivered through a control tube. This application enables locating all solenoid valves at one convenient place and reduces the risk of lightning-strike damages to the system.

